

## Nvidia Quadro Configuration Guide / Multi GPU Guide



### Nvidia Quadro Configuration Guide:

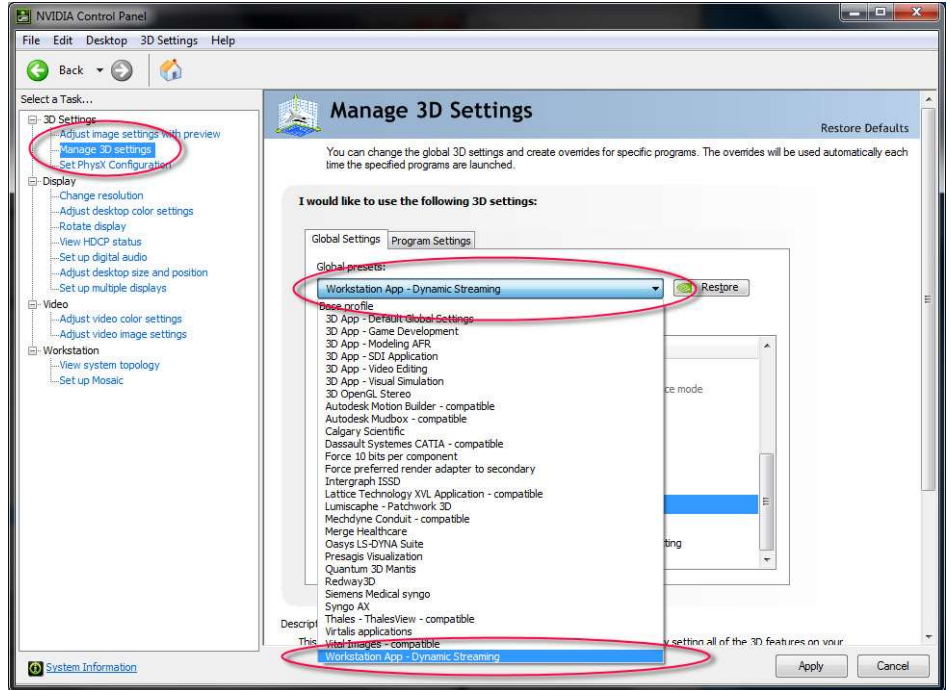
This page shows the configuration for Nvidia Quadro Cards. Misconfiguration might cause tracking failure and distorted/frozen video.

1. Launch the Nvidia Control Panel. To do so, right click the windows desktop, select "Nvidia Control Panel"



2. In the left hand list, select "Manage 3D Settings"  
 3. Set the "Global Preset" dropdown to "Workstation App - Dynamic Streaming"  
 4. Click "Apply" and restart your computer.

5. For Quad Buffer output modes in CAVE or Powerwall, make sure to set "Stereo Enable" to "Enable" and "Stereo Output Mode" matching to your 3D Output Device.



### Dual GPU Laptops / Computer Guide:

For Low-Power GPU equipped systems (usually Laptops) we recommend to disable the low power GPU.

Transfer of captured OpenGL data between a e.g. low power Intel GPU and a high power Nvidia GPU can cause the moreViz client to show a black screen.

1. Launch the Nvidia Control Panel. To do so, right click the windows desktop, select "Nvidia Control Panel"  
 2. In the left hand list, select "Manage 3D Settings"  
 3. Set the point "2. Select the preferred graphics processor to "High-Performance NVIDIA Processor"

Another method is to disable the low Power GPU on BIOS / UEFI level. Yet this option is not always available. For details about your computer, please consult your hardware partner or the computer manual.

The last recommendable method is to disable the low power graphics card in the windows device manager.

